

# INSTALLATION MANUAL:

**COR-1400200**

JEEP WRANGLER 3.50" REAR BUMP STOPS  
(1997-2006, TJ/LJ)



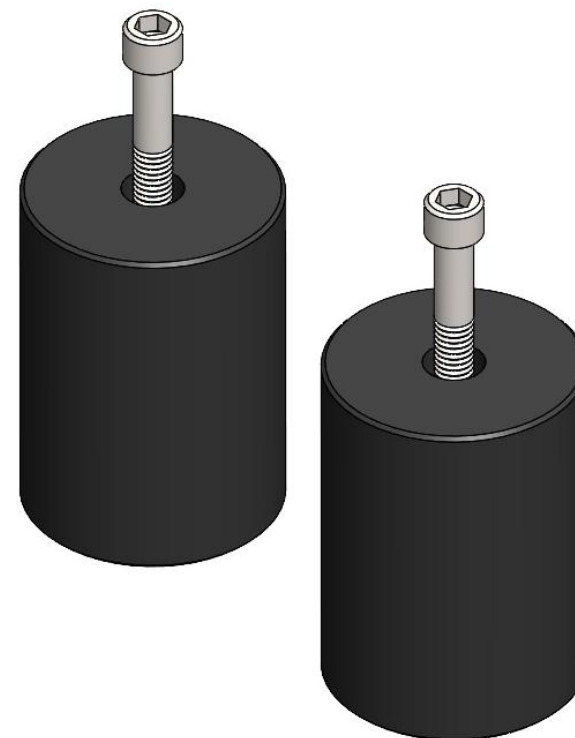
# INCLUDED ITEMS

1400200 Jeep Wrangler 3.50" Front Bump Stops			
QTY	Part Number	Description	Class/Grade
2	PLA-HDPE	Jeep Wrangler 3.50" Bump Stop	N/A
4	93312	3/8"-16 x 2.25" Hex Drive Zinc Finish Alloy Steel Socket Cap Screw	ASTM A574

## Product Notes and Features:

The Jeep Rear Bump Stops are designed to limit suspension compression. Using these extensions prevents damage to your suspension components when tackling rugged terrain, specifically during a "bottom-out" driving condition.

- Designed to meet the demands of rugged terrain and daily driving
- Included Grade 8 hardware with a corrosion-resistant finish
- Provides vehicle with 3.50" of fixed bump stop over-compression protection
- Spring removal required for installation
- Drilling and tapping required



# INSTALLATION INSTRUCTIONS

## TOOLS REQUIRED FOR INSTALLATION

- Hex keys 5/16"
- Standard sockets and wrenches 9/16"
- Drill and bits (vehicle dependent) 13/32", 5/16"
- Tap (vehicle dependent) 3/8"-16

**\*\*\*Take this product to a licensed professional if you are hesitant about the installation process!\*\*\***

1. Remove the springs. Begin on one side of the axle and support it. Remove the sway bar end links and jack the vehicle up by the frame until the spring is removeable. Depending on the vehicle, the track bar may need to be removed at the axle-end for full-droop.

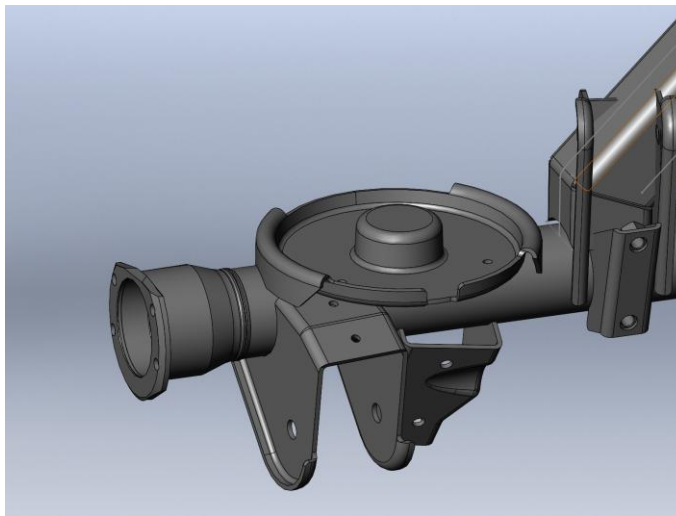


Figure 1: CAD photo of spring pad with spring removed

**TIP: Some Clayton Off Road Springs are side-specific. Make note of which spring goes where before setting them down.**

# INSTALLATION INSTRUCTIONS

2. Locate the bump stop in the center of the spring perch. On vehicles that need have the spring perch drilled out for the bolt, mark the center of the spring perch with a paint pen. Then, drill and tap the spring perch at the marked location.

Drill the hole with a 5/16" drill bit and tap with a 3/8"-16 tap.

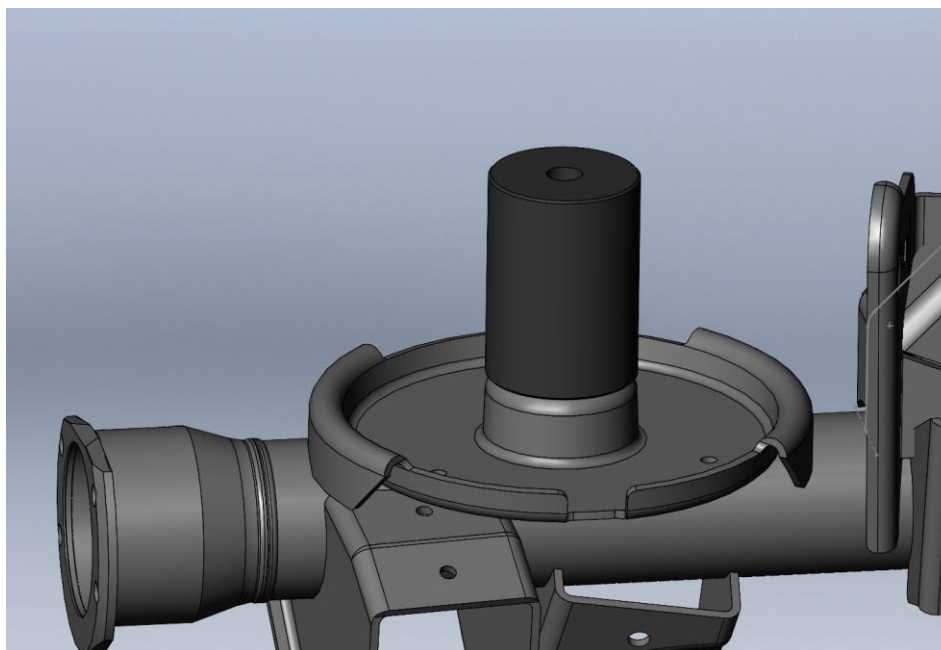


Figure 2: CAD photo of bump stop centered on spring perch

# INSTALLATION INSTRUCTIONS

3. Install the included hardware through the center of the bump stop. Tighten hardware using a 5/16" hex key into the tapped section of the spring perch. Tighten the bolt down by hand, then reinstall the spring back over the bump stop.



Figure 3: Spring reinstalled in spring perch

# INSTALLATION INSTRUCTIONS

4. Reinstall the track bar, if it was removed. Tighten to manufacturers torque specification. If using upgraded hardware, torque to supplier's torque specification.



Figure 4: Rear track bar reinstalled at the axle mount

# INSTALLATION INSTRUCTIONS

5. The installation is complete. Please ensure that any/all bolts holding the bump stop down to the perch are securely fastened. You may now flex out the vehicle to determine if more or less bump stop is needed for your specific setup.



## POST-INSTALLATION CHECKLIST:

- Bump stop hardware torqued to 30 ft-lbs, or until plastic begins to bulge
- Track bar is reinstalled with proper torque specification
- Springs are properly seated in the spring perch and not bowing or bound up
- Required amount of bump stop is achieved, and suspension up-travel is properly limited

